



2017 IMPACT





Transforming Health in Illinois



Our mission: IPHI mobilizes stakeholders, catalyzes partnerships, and leads action to promote prevention and improve public health systems in order to maximize health, health equity, and quality of life for the people of Illinois.

Dear Friends,

After two decades of connecting and activating stakeholders and sectors to improve health, IPHI continues to make substantial progress towards creating healthier, more equitable communities—not just in Illinois, but across the nation. We know that a community-driven, multi-sectoral approach is a key strategy to address broad systemic health inequities that fall along the fault lines of race and class. That's why IPHI works day in and day out with a sole focus on creating a high-functioning public health system that empowers everyone to lead healthy lives.

These 2017 highlights show how IPHI unites and leads partners to transform health by influencing policy, catalyzing innovations, and building community capacity. As always, it is your partnership that makes our success possible. We look forward to working with you to make an even greater impact on the health of our communities in 2018.


Elissa J. Bassler, CEO

Building Community Capacity

IPHI is strengthening community capacity to develop and implement multi-sector public health solutions.



2017 Highlights

- » **Enhanced Physical Education (PE):** IPHI convened 14 Pump Up P.E. trainings in 2017 and has now prepared more than 1000 P.E. teachers across the state to promote enhanced P.E. practices and implement Illinois' revised learning standards and fitness testing requirements.
- » **Strategic Technical Assistance:** IPHI builds capacity to understand the root causes of health disparities and work towards health equity. In 2017, 22 government, health, and community organizations serving more than 21 million people engaged IPHI to help with strategic health assessment, planning, implementation, and evaluation.
- » **CDC Strategic Visioning:** IPHI facilitated the strategic planning process for representatives of state and federal vital statistics offices, helping them create a vision document defining their ideal future systems and products over the next 8-10 years.

Accelerating Innovation

IPHI is bringing key stakeholders together to share lessons learned and work toward collective impact.



2017 Highlights

- » **Alliance for Health Equity:** IPHI facilitates one of the largest hospital/community partnerships in the country. This year, the IPHI-led Health Impact Collaborative of Cook County merged with the Healthy Chicago Hospital Collaborative to form the Alliance for Health Equity, bringing more organizations together with the goal of addressing pressing health issues facing Cook County. The merged collaborative continues to focus on improving outcomes related to social determinants of health and mental health/substance use disorders.
- » **Midwest Forum on Hospitals, Health Systems and Population Health:** IPHI planned and co-hosted a regional forum on Nov. 29- Dec. 1, 2017, which drew participation from over 400 health and hospital leaders across the Midwest to share innovations in improving population health.
- » **Data Across Sectors for Health (DASH):** IPHI leads DASH, a Robert Wood Johnson Foundation initiative that builds local collaborations' ability to share data to improve community health. IPHI continued to expand a learning network called *All In: Data for Community Health*, accelerating the sharing of lessons among more than 60 data sharing projects across the country. We also hosted a national meeting bringing together over 250 stakeholders to discuss data-driven public health strategies.

Improving Policy

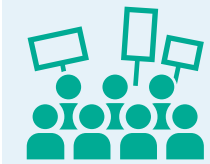
IPHI is advancing new policy solutions to reduce chronic diseases through research and advocacy.



2017 Highlights

- » **Illinois Alliance to Prevent Obesity:** Convened by IPHI, the Illinois Alliance to Prevent Obesity underwent strategic planning to adopt a new purpose statement and new policy priorities for 2018 and beyond.
- » **Cook County Sweetened Beverage Tax:** IPHI strongly advocated to maintain the Cook County sweetened beverage tax. While ultimately repealed, the campaign engaged dozens of new partners in our work and helped to educate communities across Cook County on the health harms of sugary drinks.

IPHI: 2017 in Review



50+ organizations participated in the Cook County sweetened beverage campaign

7

healthy vending initiative pilots were launched



1,000+ teachers have now been trained through the Pump Up P.E. program

22

groups serving

21 M

people engaged IPHI for strategic consultation



650+ people attended national and regional conferences hosted by IPHI

60+

local data sharing projects across the country participated in the *All In: Data for Community Health* learning collaborative



The Alliance for Health Equity engaged:

26

hospitals

7

health depts.

100+

community organizations



Voices of IPHI Initiatives

Illinois Alliance to Prevent Obesity (IAPO)

"Staff were very satisfied with the options offered during the healthy vending pilot. In fact, we just switched vendors and now have a machine that offers only healthy options! This is only possible because we increased staff buy-in with IAPO this spring. Our healthy vending just came full circle!"

- IAPO Member

Data Across Sectors for Health (DASH)

"DASH has really given us a larger forum—the synergy of other entities that are tackling some of these same types of issues and questions...It's allowing us to participate in a larger community that has been down this road and learned some things."

- DASH Grantee

Alliance for Health Equity

"We have had engagement with parties that would never have been at the table if it was not for the Alliance for Health Equity."

-Alliance for Health Equity Member



IPHI Program Centers

Center for Community Capacity Development

Enhances the effectiveness and reach of local public health systems by collaborating with public health partners to provide training, technical assistance, and support services for community-level health improvement and prevention programs.

Center for Policy and Partnership Initiatives

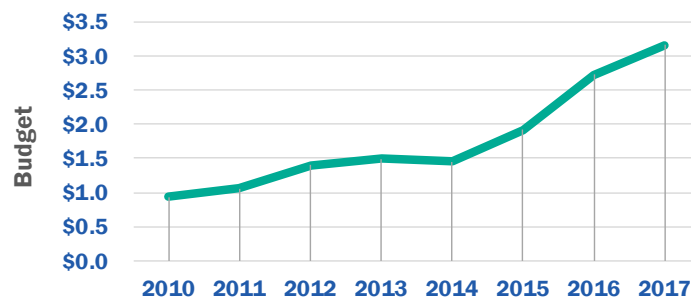
Promotes and incubates stakeholder-engaged policy and practice initiatives by developing and activating high level multi-sector partnerships.

Center for Health and Information Technology

Ensures that public health data and information are used to strengthen policy, planning, and program development by working for improved public and private data collection, integration and dissemination.

IPHI Growth

2010 - 2017



IPHI Signature Initiatives



Thank you to our many foundation and project partner funders in 2017

- » Action Now Initiative
- » Adams County Health Department
- » Advocate Health Care
- » American Heart Association - Voices for Healthy Kids
- » American Planning Association - Illinois
- » AMITA Health
- » Ascension Crittenton Hospital
- » CBS EcoMedia
- » Champaign Urbana Public Health Department
- » Chicago Community Trust
- » Chicago Department of Public Health
- » Chicago Heights School District #170
- » City of St Louis Department of Health
- » Collinsville Community Unified School District #10
- » Cook County Department of Public Health
- » Cook County School District #104
- » Danville School District #118
- » Eastland Community Unified School District #308
- » Henry Ford Health System
- » Illinois Association of Public Health Administrators
- » Illinois Critical Access Hospital Network
- » Illinois Department of Public Health
- » Illinois Prevention Research Center
- » Iroquois-Kankakee Regional Office of Education
- » Kane County Regional Office of Education
- » Kankakee County Health Department
- » Laura and John Arnold Foundation
- » Loyola University Medical Center / Gottlieb Hospital
- » Lyon Software
- » Macon-Piatt Regional Office of Education #39
- » Maricopa County Department of Public Health
- » Mercy Hospital and Medical Center
- » Michael Reese Health Trust
- » MidAmerica Center for Public Health Practice at the University of Illinois at Chicago
- » Mississippi State Health Department
- » National Network of Public Health Institutes
- » Northwestern Memorial Healthcare
- » Novo Nordisk
- » Otho S.A. Sprague Memorial Institute
- » Park Forest-Chicago Heights School District #163
- » Peer Health Exchange
- » Presence Health
- » Professional Research Consultants
- » Project Patient Care
- » Public Health Institute of Metropolitan Chicago
- » Robert Wood Johnson Foundation
- » Rush University Medical Center / Rush Oak Park Hospital
- » Sinai Urban Health Institute
- » Skokie / Morton Grove School District #69
- » Swedish Covenant Hospital
- » Tazwell County Regional Office of Education #53
- » Trinity Health
- » United Way of Will County
- » University of Illinois Center for Prevention Research and Development
- » University of Wisconsin Population Health Institute
- » Wilmington Community Unit School District #209

IPHI Board of Directors

- » Joseph A. Antolin, JD, Antolin & Associates Consulting LLC; Asset Funders Network
- » Elissa Bassler, CEO, Illinois Public Health Institute
- » Donna L. Gerber, MBA, M2BG Consulting
- » Dan Harris, MA, Illinois Network of Child Care Resources and Referral Agencies
- » Bob Kieckhefer
- » Patricia Merryweather, MA, Project Patient Care
- » Javette Orgain, MD, MPH, FAAFP, University of Illinois at Chicago
- » Will Snyder, Presence Health

